



**Riparian Plants**

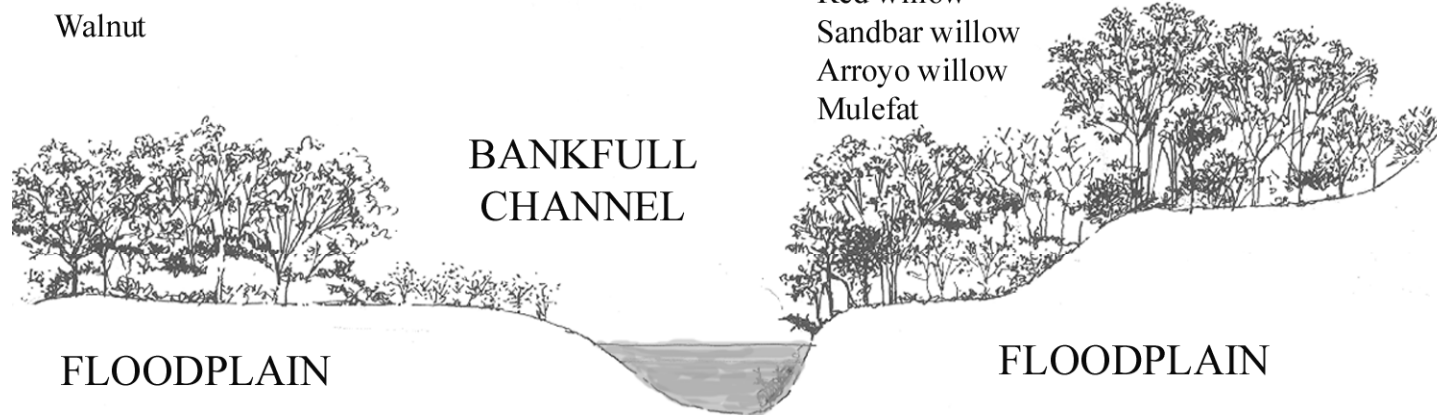


Riparian plants grow on the floodplain adjacent to stream channels

Box Elder  
 Big Leaf Maple  
 Mature Cottonwood  
 Mature Willow  
 Walnut

Cottonwood  
 White alder  
 Yellow willow  
 Red willow  
 Sandbar willow  
 Arroyo willow  
 Mulefat

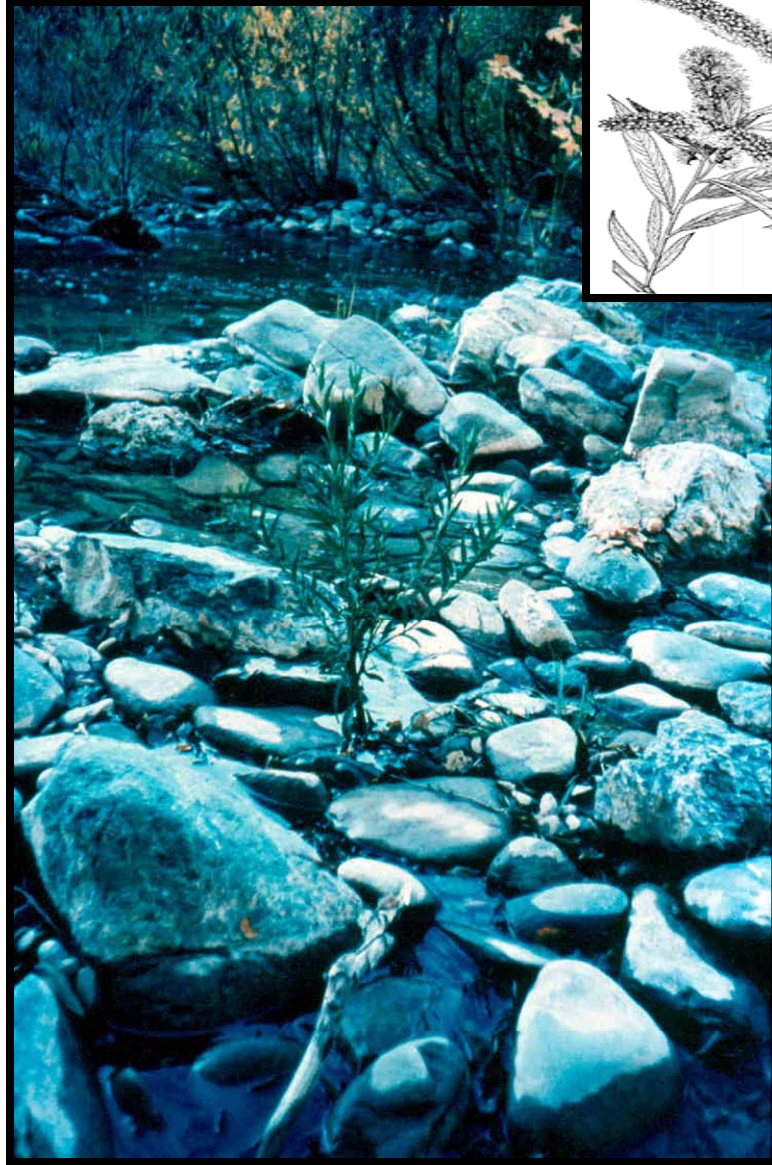
Valley Oak  
 California Bay Laurel  
 Mature Cottonwood  
 Mature Willow  
 Big Leaf Maple  
 Box Elder



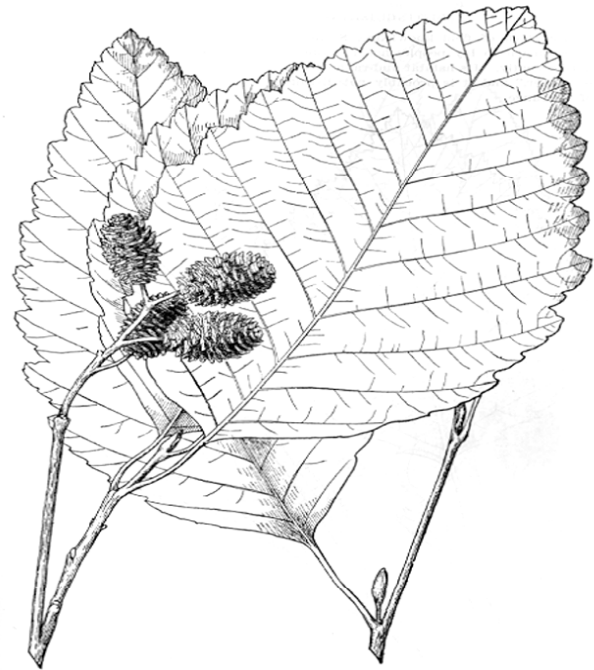
FLOODPLAIN

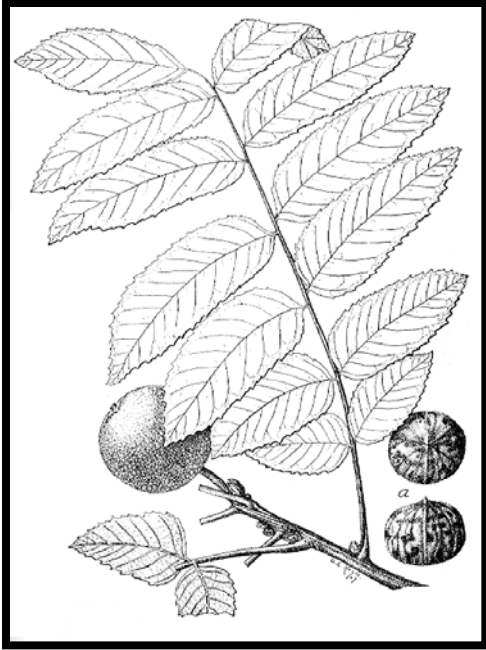
FLOODPLAIN

# WILLOW



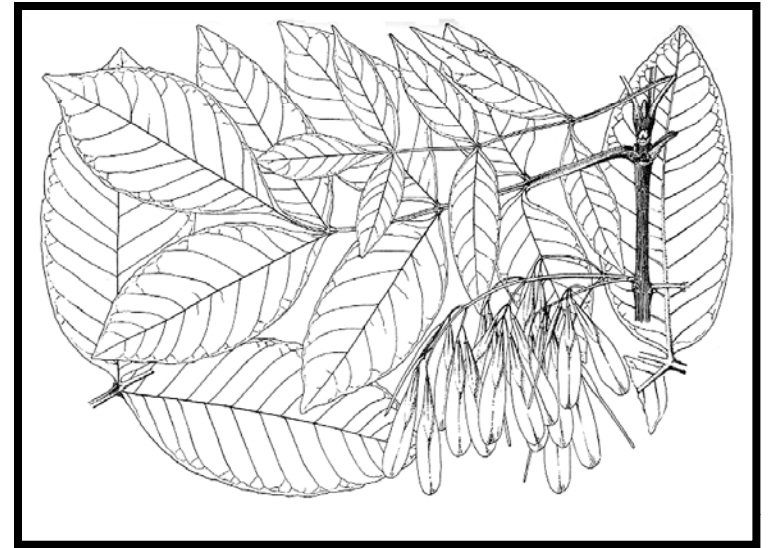
# ALDER





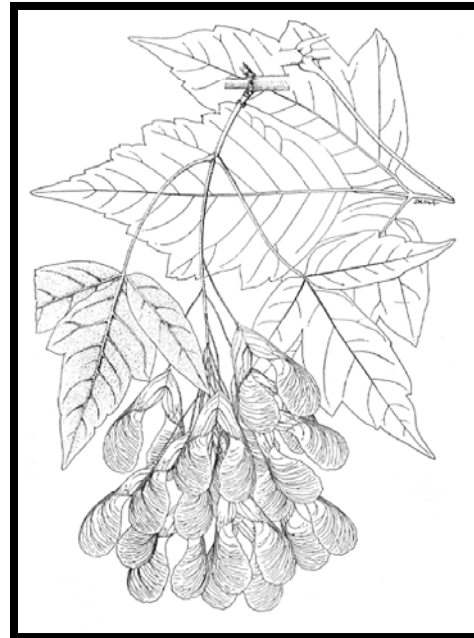
**CALIFORNIA WALNUT**





**OREGON ASH**

## BOX ELDER





**BIG-LEAF MAPLE**





**CALIFORNIA  
BUCKEYE**

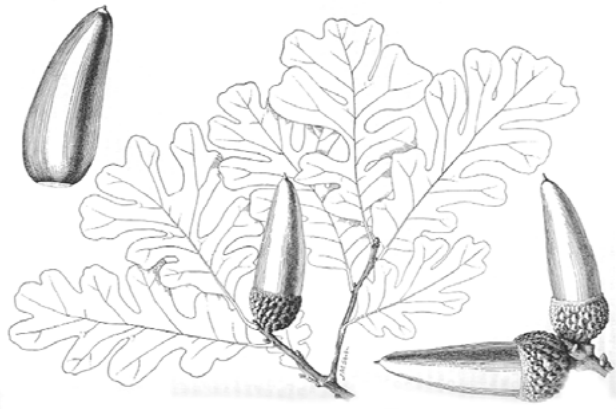




**CALIFORNIA BAY LAUREL**



**VALLEY OAK**



UNDERSTORY PLANTS



**CA. ROSE**



**HORSETAIL**



**NATIVE BLACKBERRY**



**SNOWBERRY**

UNDERSTORY PLANTS



Basket Sedge



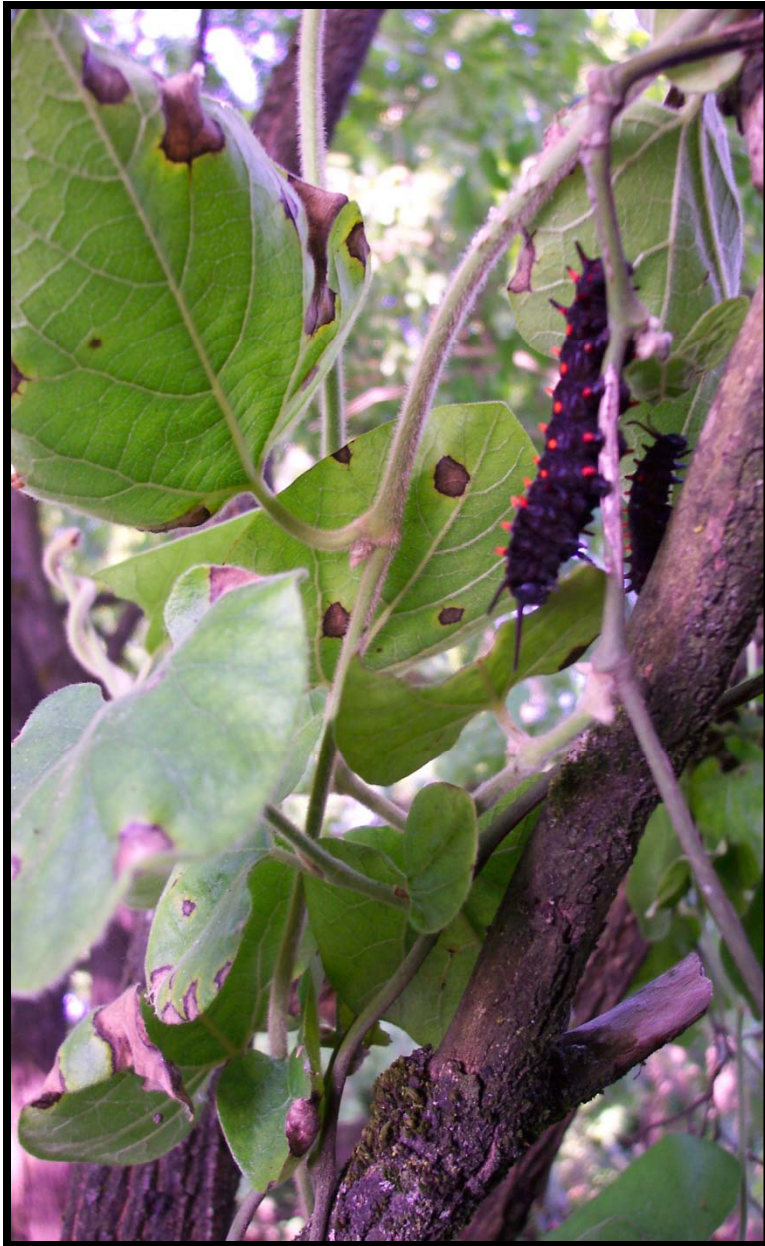
Spicebush



Owl's Clover

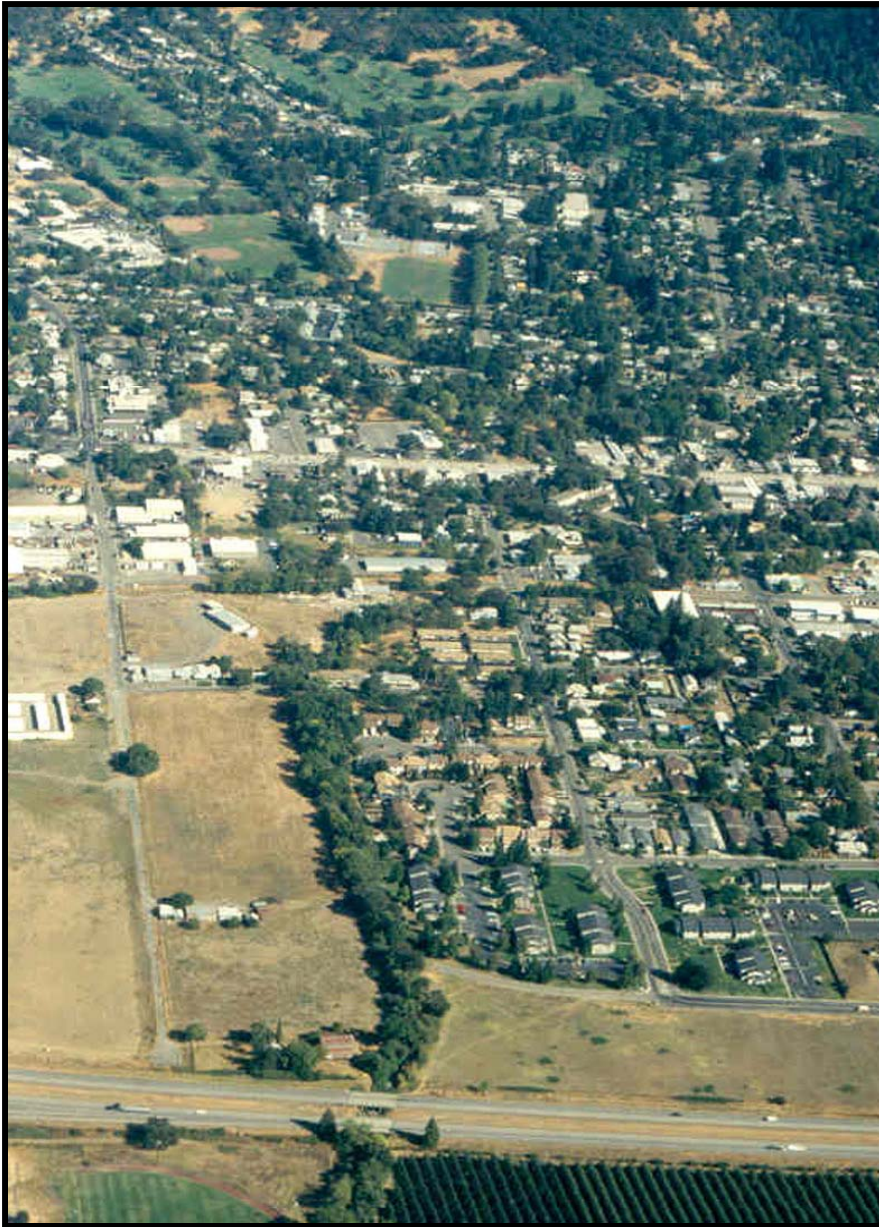


Native  
Honeysuckle



**DUTCHMAN'S PIPE AND PIPE VINE  
SWALLOWTAIL CATERPILLAR**





**SMALL CREEK ADJACENT TO URBAN AREA HAS LITTLE FLOW IN SUMMER TO DILUTE INFLOWS FROM CAR WASHING AND LAWN RUNOFF**

**DO NOT THROW YARD  
WASTE INTO CREEKS  
AND THE RIVER. IT IS  
NOT GOOD FOR THE  
ECOSYSTEM.**

