

CERTIFIED



**FISH
FRIENDLY
FARMING**

**FISH FRIENDLY FARMING
CERTIFICATION PROGRAM
SACRAMENTO-SAN JOAQUIN DELTA**



**Laurel Marcus
Executive Director
Ca. Land Stewardship Institute**

WHO ARE WE? CALIFORNIA LAND STEWARDSHIP INSTITUTE



- **Nonprofit organization works statewide**
- **Formed in 2004 to work with private landowners on resource management, reducing regulatory burdens, funding for projects and improving land stewardship. We support agriculture and farmers. We are not an environmental group.**
- **Board of Directors is made up of small farmers, ranchers and winery owners**
- **Staff are primarily scientists and complete farm assessments, project designs and implement projects. Private non profit can keep farm plans private.**
- **Our main program is the Fish Friendly Farming (FFF) Certification which combines providing regulatory compliance with sustainability marketing opportunities. The Fish Friendly Farming Certification Program began in Mendocino and Sonoma Counties in 1997. The program started in the Napa County in 2002, Solano County in 2005 and the Sierra Foothills in 2008.**
- **Statewide the FFF program has 200,000+ acres enrolled made up of over 1800 individual farms. There are 80,000+ acres in the Fish Friendly Ranching Program.**

Process of Developing the FFF program for the Delta

- In 2016 Delta Conservancy staff asked CLSI to develop a version of the FFF program for the Delta. We applied for funding putting up 50% of the cost and the grant was approved by the Delta Conservancy**
- Over a 3 year period we created a Technical Advisory Committee made up of representatives from the County Farm Bureaus, Cooperative Extension, Regional Board, Water Quality Coalitions, Agricultural Commissioners and growers to review the program as it was developed. Their input was helpful and was incorporated**
- Working with several Farm Bureaus had farmers review the Farm Plan template and BMPs and incorporated farmer feedback/revisions. BMP workbook is a reference for growers to use and Farm Plan Template is filled out with FFF staff**
- The Regional Board approved the FFF Farm Conservation Plan Template as an alternative for the required farm evaluation, irrigation and nitrogen management plan, sediment and erosion control plan templates. Farmer still has to be part of WQ Coalition**
- The FFF program is designed to minimize the time it takes for farmers. FFF staff complete all maps and forms effectively reducing time spent on paperwork while giving growers recognition for their good stewardship.**
- The farmer participates in one workshop, the site visit, review of the plan and the certification visit - total estimated time is about 6-12 hours.**

How does the program work?

- Interested farmers enroll in the program and work with FFF staff to schedule a site visit.
- On the site visit FFF staff will map features of the farm (fields, ditches etc.) and fill out a farm plan template.
- The farm plan documents the good land stewardship practices rather than looking for problems.
- The farmer assists with the site visit and completion of the farm plan, but FFF staff do most of the work.
- The farmer reviews the plan for accuracy and then the site is ready for certification.
- Certifiers including County Agricultural Commissioners, NRCS or possibly RCDs visit the site with the grower and FFF staff to review the plan. Everyone is working in a collaborative rather than regulatory mode.
- All FFF farm plans remain private protecting the grower.
- The FFF program works with the Water Quality coalitions to provide the reporting data they need while simplifying compliance.
- If FFF site is in an exceedance area farmer doesn't have to go through WQ coalition but can work with FFF to reduce time spent
- Farmer can display FFF signs once certified

Video of Chris Ruddick, pear and winegrape farmer in the Ukiah Valley and a fish friendly farmer

https://www.youtube.com/watch?v=4TY4MqK_p2U



Fish Friendly Farming Sign



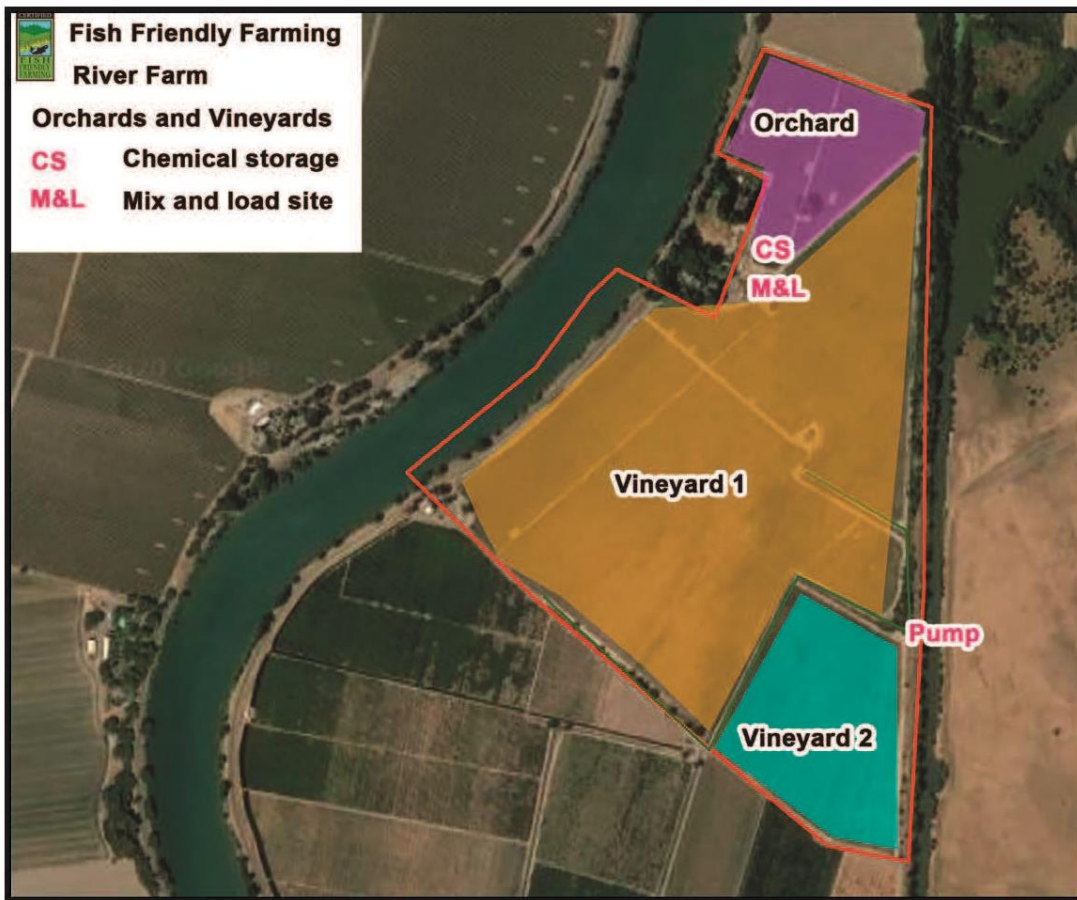


Fish Friendly Farming River Farm

Orchards and Vineyards

CS Chemical storage

M&L Mix and load site



Example Farm Plan Maps

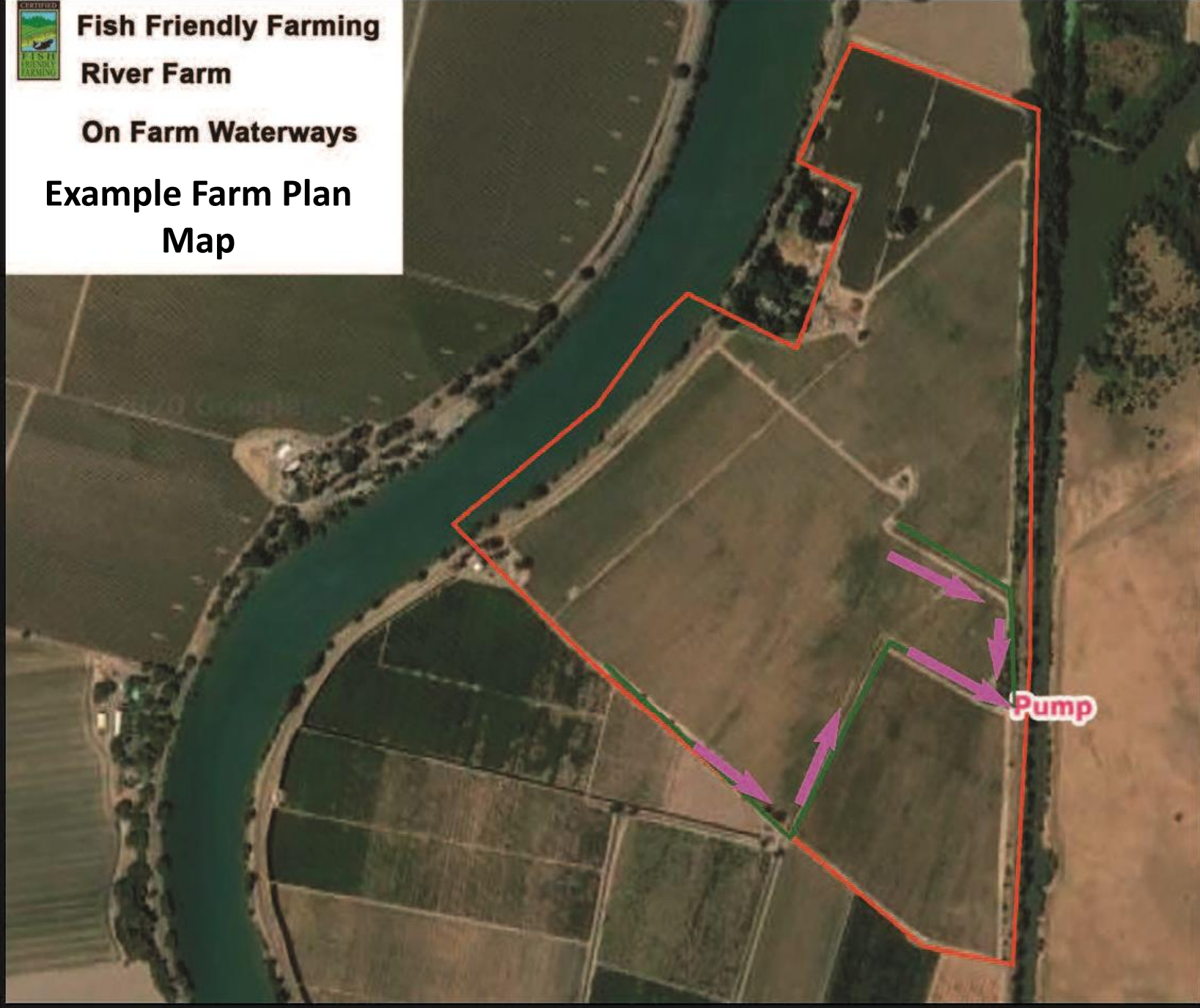




Fish Friendly Farming River Farm

On Farm Waterways

Example Farm Plan Map



What is included in the FFF farm plan?

Farm plan incorporates all the information included in the ILRP templates as well as information to demonstrate the work farmers do to benefit the environment

Farmers carry out many cultural practices to control pests and diseases that do not involve chemicals such as clearing debris, fallen crop and dead vegetation from the orchard, vineyard or field, crop rotations, harvesting annual crops before chemical treatments are needed, supporting beneficial insects and other actions. We document these practices in the farm plan

We list chemical use from pesticide use reports and will discuss the materials used with the grower and if less toxic, or less likely to runoff materials are available. Tables with this info are included in the FFF workbook for growers to use. Grower and PCA make the decision however.

We document the features related to chemical storage, mix and load, back flow prevention if applicable, and application methods

We assess the site for soil conservation on the farm, drainage ditches, roads and possibly other locations. We document water conservation practices

Assist grower in filling out the Irrigation and Nitrogen Management Plan worksheet and submit to WQ coalition

There are optional practices for increasing on farm wildlife habitats, controlling invasive non native plants, planting hedgerows and other things

Pests and diseases have to be controlled



CODLING MOTH DAMAGE IN PEARS



PEAR BLISTER MITE DAMAGE



WALNUT HUSK FLY ADULT



NAVAL ORANGEWORM



CODLING MOTH



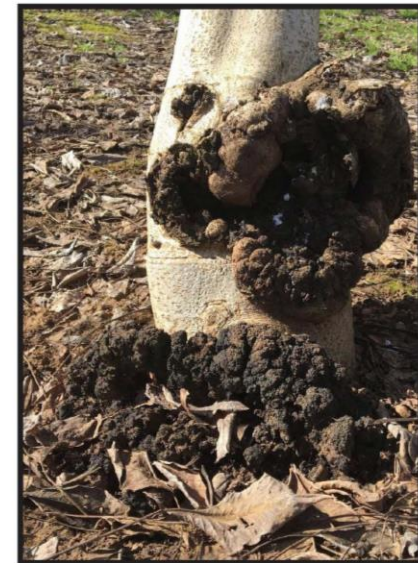
TWO-SPOTTED SPIDER MITES WITH EGG



FRUITTREE LEAFROLLER



WALNUT BLIGHT



CROWN GALL



POWDERY MILDEW



FUSARIUM EAR ROT



CUTWORM

Weeds from hell



Black mustard



Purslane



Spiny sow thistle



Pigweed



Bermuda grass



Harding grass







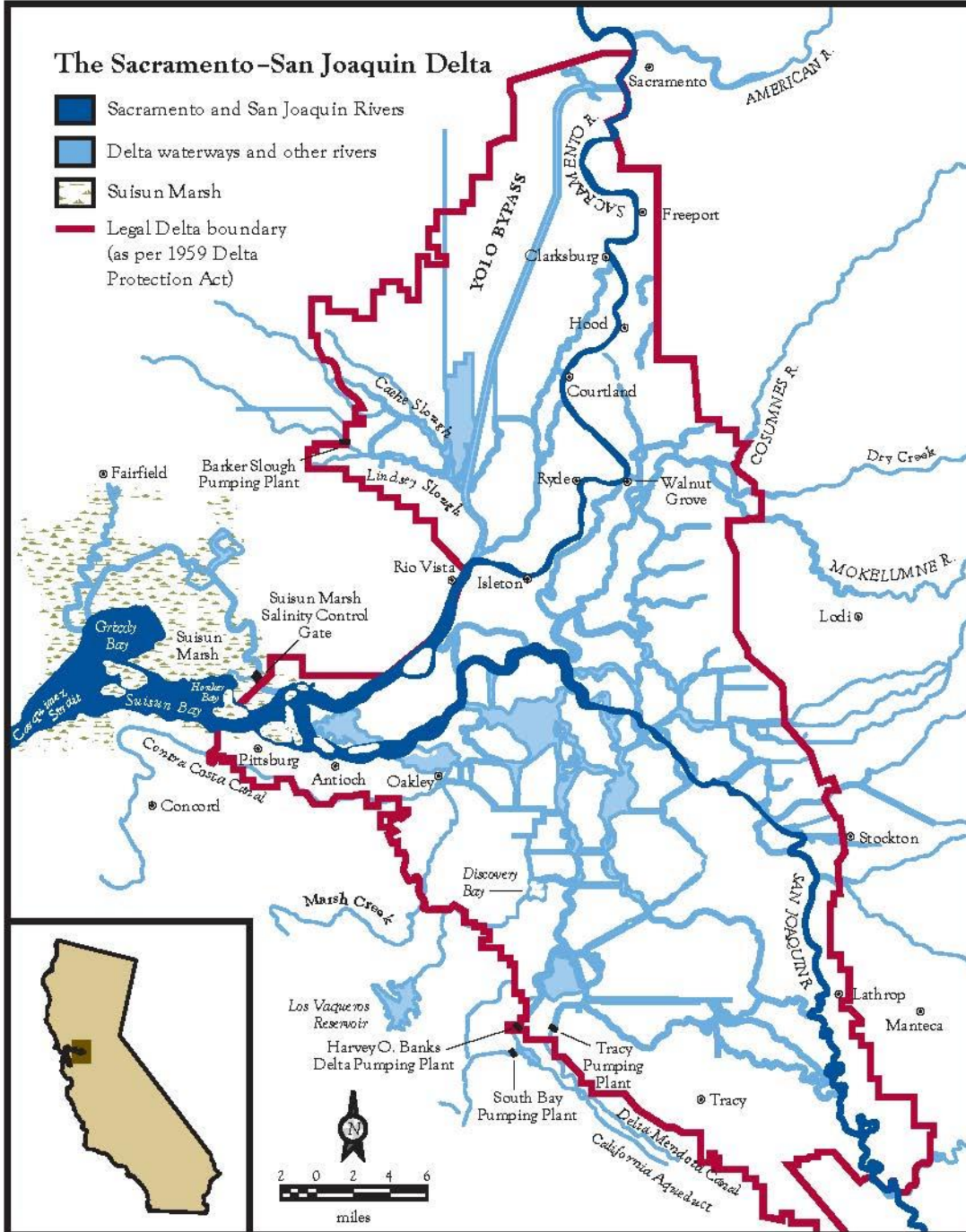
Nightshade



Yellow nutsedge

The Sacramento-San Joaquin Delta

-  Sacramento and San Joaquin Rivers
-  Delta waterways and other rivers
-  Suisun Marsh
-  Legal Delta boundary (as per 1959 Delta Protection Act)



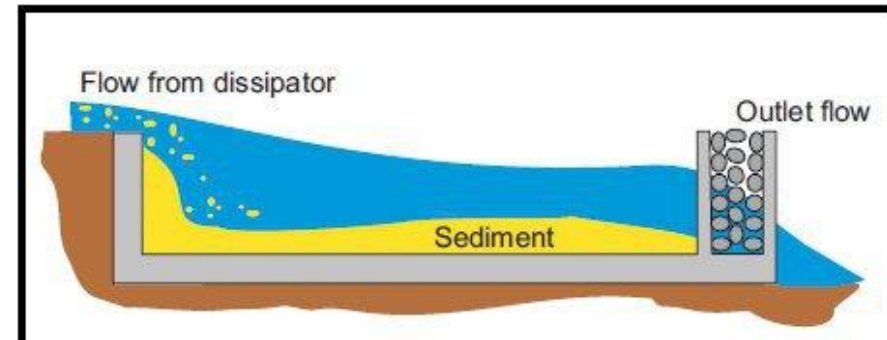
In September 2020 CLSI received a contract from the Delta Conservancy to implement a Clean Water Grant (319) we wrote with the Conservancy to implement the FFF program in the Delta.

This grant from the State Water Resources Control Board will fund Farm Plans and a series of projects for farmers.

Funding is only applicable to farms within the legal Delta

Farm plans are free funded by the grant

Grant funding is also available to implement projects to improve water quality including: return irrigation flow and drainage water settling basins; reduced irrigation water use improvements; sediment filtration improvements such as filter strips and vegetated field borders; native vegetation restoration; lining of canals and drainage ditches, streambank revegetation, berms to manage runoff or discharge water; culvert and energy dissipater installation or replacement; road storm proofing, water conservation technology and others.



Fill out the sign up form that is on our website –

www.fishfriendlyfarming.org

Or call/email Danielle if you need assistance to get the sign up form 707 741 9420 danielled@fishfriendlyfarming.org

If you have more questions call/email Laurel 707 869 2860 laurelm@fishfriendlyfarming.org

Once we receive your form we will set up a visit to your farm

QUESTIONS?